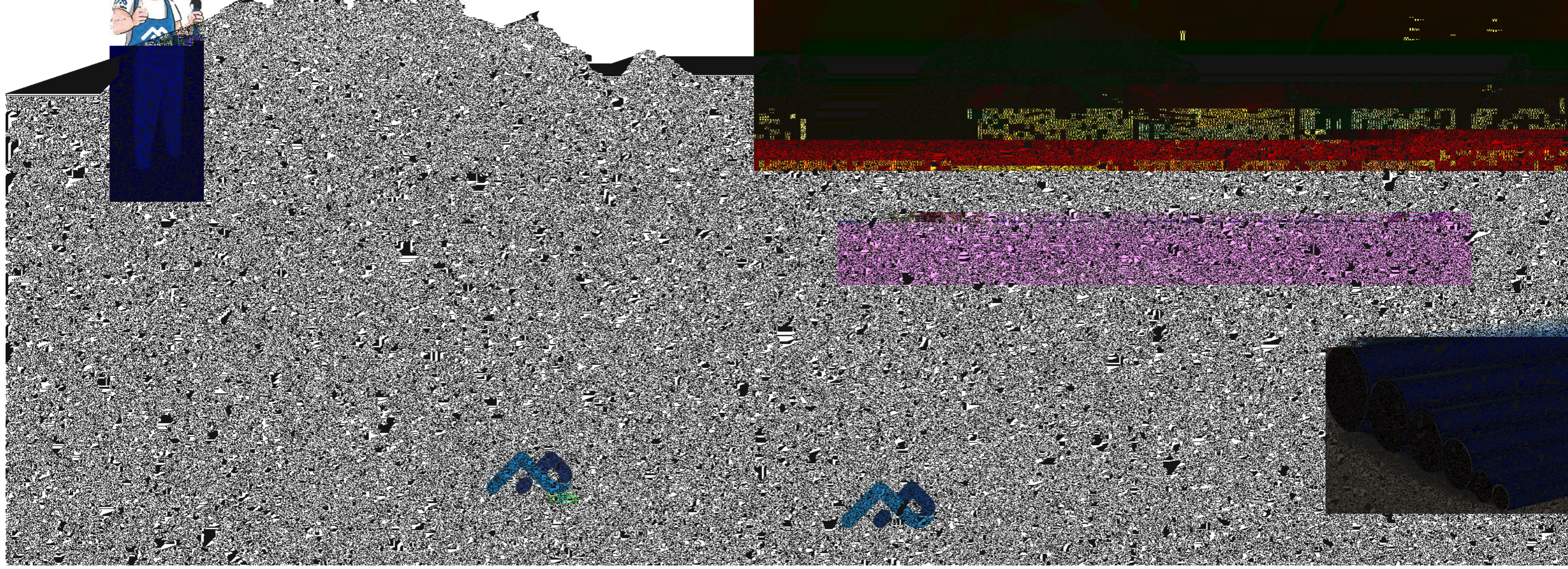
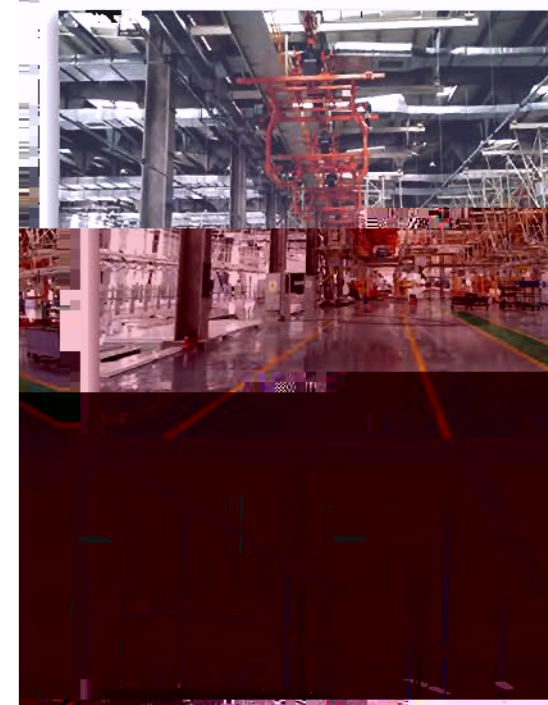
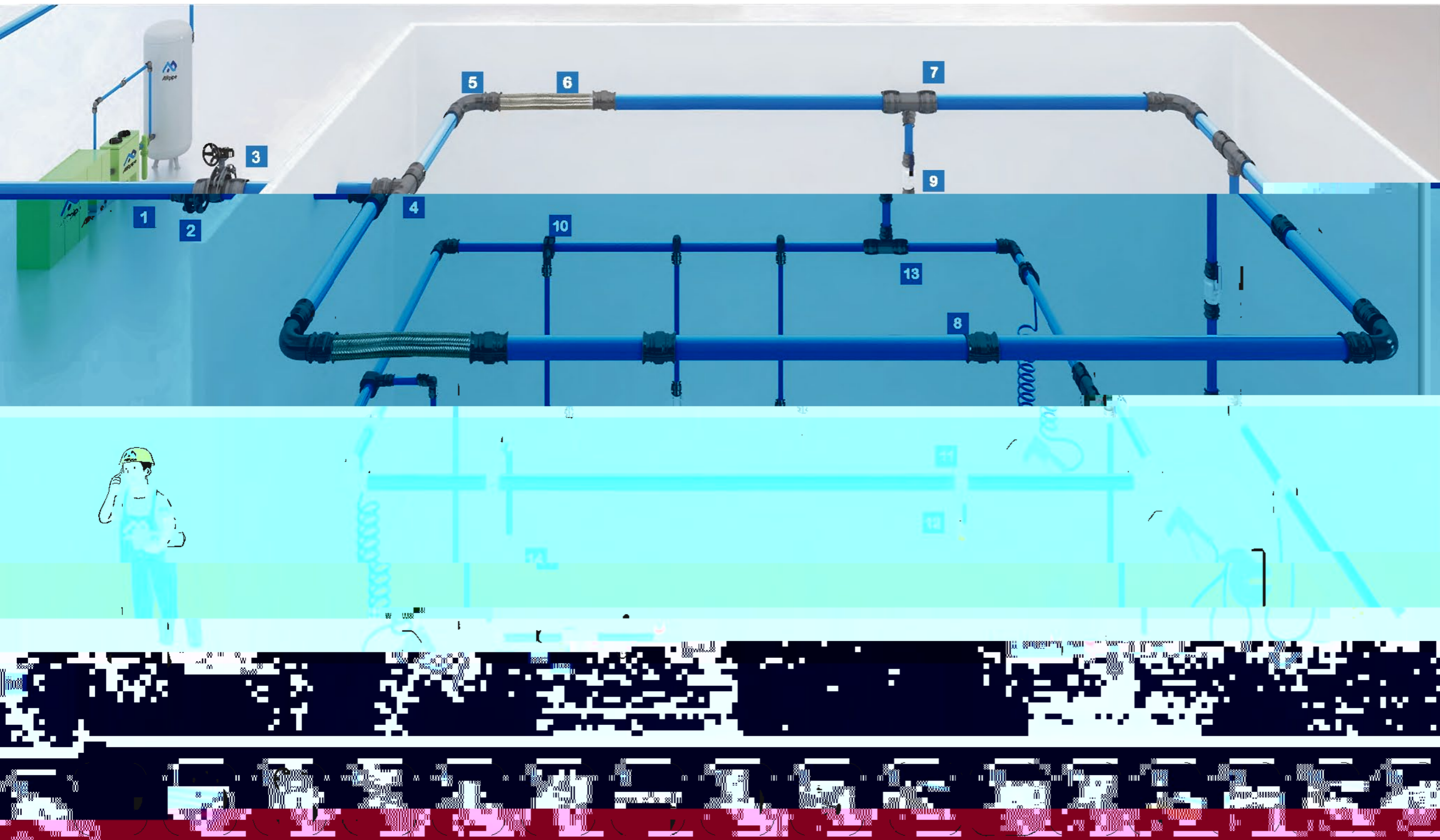


We provide superior performing compressed air & gas systems with





- | | | | | | | | |
|----------------------------|--------|-----------------------------------|-------|--------------------------------|--------|---------------------------------------|-----------|
| 1 Aluminum Pipe | 剛性鋁合金管 | 5 Aluminum 90 Degree Elbow | 90度彎頭 | 5 Quick Plug Ball Valve | 快速連接球閥 | 5 Quick Plug Equal Tee | 快插組合等徑三通 |
| 2 Flanged Connector | 法蘭片 | 6 Flexible Hose | 彈性耐壓管 | 6 Aluminum Quick Drop | 支管快接頭 | 6 Thread Quick Plug Ball Valve | 快插組合螺紋球閥 |
| 3 Quick Connect | 快速連接螺閘 | 7 Quick Tee | 支管快接頭 | 7 Quick Drop | 支管快接頭 | 7 Quick Plug 90 Degree Elbow | 快插組合90度彎頭 |
| 4 Quick Tee | 支管快接頭 | 8 Quick Tee | 支管快接頭 | 8 Quick Tee | 支管快接頭 | 8 Quick Tee | 支管快接頭 |
| 9 Quick Tee | 支管快接頭 | 10 Quick Tee | 支管快接頭 | 10 Quick Tee | 支管快接頭 | 10 Quick Tee | 支管快接頭 |
| 11 Quick Tee | 支管快接頭 | 12 Quick Tee | 支管快接頭 | 12 Quick Tee | 支管快接頭 | 12 Quick Tee | 支管快接頭 |
| 13 Quick Tee | 支管快接頭 | 13 Quick Tee | 支管快接頭 | 13 Quick Tee | 支管快接頭 | 13 Quick Tee | 支管快接頭 |

Product Range & Features

產品範圍和特性

Rigid Aluminum Pipe 刚性铝合金管



- Up to max.200mm diameter - 200m³/min flow single line.
- High-quality powder coating and colors customization.
- Designed for compressed air, vacuum, and inert gases.
- Light-weight & corrosion-free.
- 管徑最大200mm，最大流量200m³/min
- 高級粉體塗裝噴塗，耐久防腐，顏色可以定制
- 適用於所有噴油或無油壓縮空氣及惰性氣體
- 重量輕，防火UL90，可全天候室外安裝

Ball-Beam End-Fitting Valves 球梁球閥



- Quick connection.
- Available for BSP/NPT thread, flange, plug-in connection type.
- High-flow design ensures optimal performance.
- 一體式快接口，快速匹配管接頭
- 可選BSP或NPT標準螺紋，包括所有相關配件
- 高流速內徑設計耐久防腐

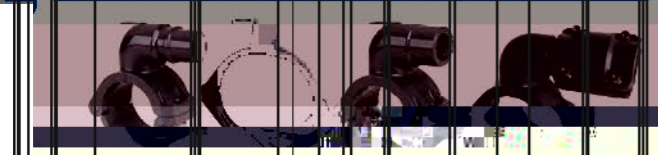
Pipe Connectors 快速管接頭



Flexible Hoses 彈性耐壓管



Quick Drop Fittings 快速更換接頭



Tools & Accessories 附件和工具



BLUE ALUMINUM PIPE 藍色鋁管

AIRpipe	DN	OD	ID
301 00 0100 01	20	20.1	17.5
301 00 0200 01	25	25.1	22.5
301 00 0400 01	40	40.1	36.5
301 00 0500 01	50	50.1	45.7
301 00 0600 01	63	67.8	63.0
301 00 0700 01	80	84.8	80.0
301 00 0800 01	100	101.8	96.8
301 00 0900 01	150	153.0	147.5
301 00 1000 01	200	205.0	197.8

*2.9M length please contact local sales.

GRAY ALUMINUM PIPE 灰色鋁管

AIRpipe	DN	OD	ID
301 00 0100 02	20	20.1	17.5
301 00 0200 02	25	25.1	22.5
301 00 0400 02	40	40.1	36.5
301 00 0500 02	50	50.1	45.7
301 00 0600 02	63	67.8	63.0
301 00 0700 02	80	84.8	80.0
301 00 0800 02	100	101.8	96.8
301 00 0900 02	150	153.0	147.5
301 00 1000 02	200	205.0	197.8

*2.9M length please contact local sales.

GREEN ALUMINUM PIPE 綠色鋁管

5.8M Length

AIRpipe	DN	OD	ID
301 00 0100 03	20	20.1	17.5
301 00 0200 03	25	25.1	22.5
301 00 0400 03	40	40.1	36.5
301 00 0500 03	50	50.1	45.7
301 00 0600 03	63	67.8	63.0
301 00 0700 03	80	84.8	80.0
301 00 0800 03	100	101.8	96.8
301 00 0900 03	150	153.0	147.5

END CAP 堵頭

AIRpipe	DN
302 08 0100 02	20
302 08 0200 02	25
302 08 0400 02	40
302 08 0500 02	50

*Union connector Included

EQUAL TEE 等徑三通

AIRpipe	DN
302 02 0100 01	20
302 02 0200 01	25
302 02 0400 01	40
302 02 0500 01	50
302 02 0601 05	63
302 02 0701 08	80
302 02 0801 08	100
302 02 1001 05	150
302 02 1101 05	200

EQUAL TEE 等徑三通

AIRpipe	DN
302 05 0100 02	20
302 05 0200 02	25
302 05 0400 02	40
302 05 0500 02	50

*Union connectors included

REDUCING PIPE TO 2" PIPE CONNECTOR 異徑管對管接頭

AIRpipe	DN
302 05 0600 01	63
302 05 0700 01	80
302 05 0800 01	100
302 05 1000 01	150
302 05 1100 01	200

*Use three union connectors

EQUAL 45° ELBOW 45° 彎頭

AIRpipe	DN
302 08 0100 01	20
302 08 0200 01	25
302 08 0400 01	40
302 08 0500 01	50
302 08 0600 01	63
302 08 0700 01	80
302 08 0800 01	100

REDUCING 45° ELBOW 異徑45° 彎頭

AIRpipe	DN
302 08 0100 02	20
302 08 0200 02	25
302 08 0400 02	40
302 08 0500 02	50
302 08 0600 02	63
302 08 0700 02	80
302 08 0800 02	100

LATERAL EQUAL TEE Y型等徑三通

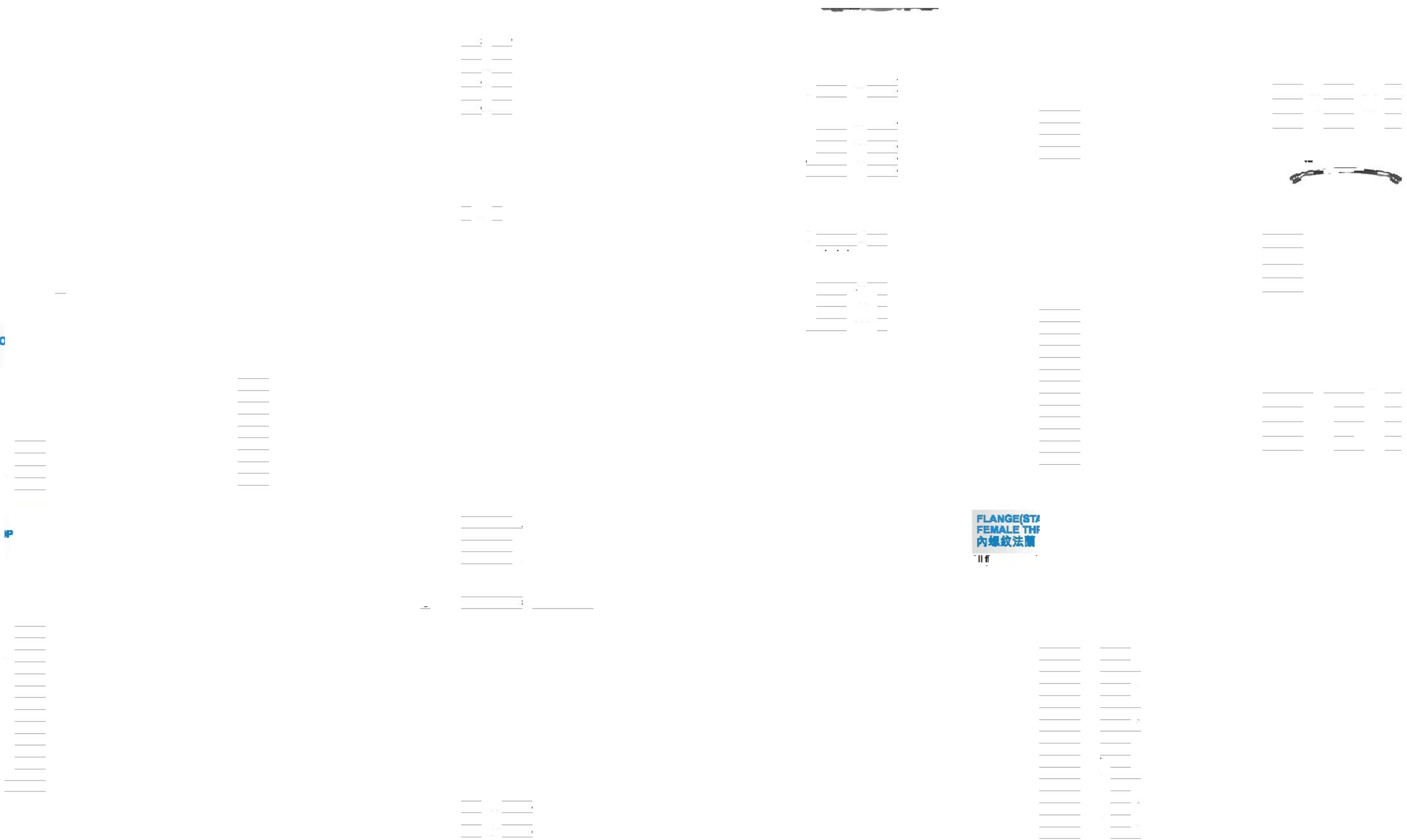
AIRpipe	DN
302 08 0100 03	20
302 08 0200 03	25
302 08 0400 03	40
302 08 0500 03	50
302 08 0600 03	63
302 08 0700 03	80
302 08 0800 03	100

LATERAL REDUCING TEE Y型異徑三通

AIRpipe	DN
302 08 0100 04	20
302 08 0200 04	25
302 08 0400 04	40
302 08 0500 04	50
302 08 0600 04	63
302 08 0700 04	80
302 08 0800 04	100

QUICK DRG
快換

**FLANGE (ST/
FEMALE THF)**
內螺紋法蘭



FIXTURE CLAMPS & ACCESSORIES
管夾



THREADED ADAPTORS
轉接頭



ATMOLYSIS BAG
分析袋

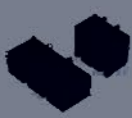


SAMPLE BOX
演示包

TOOL BOX
工具包

DRILL (TAPPER)
鑽機

CLAMP SPACER
管夾墊



VORTEX FLOW METER
渦街流量計



PRESSURE METER
氣體壓力錶



DRILL HOLDER
鑽頭夾具



MARKER
鉛筆器



HOLE DEBURRER
去毛刺器



ALUMINUM PIPE DEBURRER
鋁管去毛刺器



SPANNERS
水泵鉗



ALUMINUM PIPE CUTTER
鋁管切割器



ELECTRIC PIPE CUTTER
電動鋁管切割機



FIXING BOLTS
螺栓



SQUARE STEEL CLAMP
壓板



ADJUSTABLE BRACKET
可伸縮支架



GRIDER CLAMP
老虎鉗



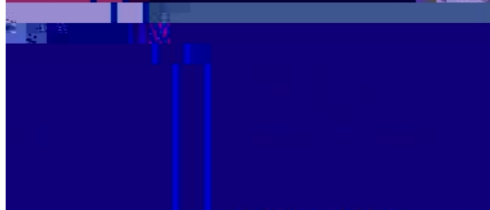
SQUARE STEEL CLAMP
壓板



PIPE BENDING
彎管器



WIRE SUSPENSION
鋼絲繩



SELF TAP SCREWS
螺絲



ROCKING MACHINE
搖管機



WALL MOUNTED BRACKET
懸臂支架



UNIVERSAL BEAM SUSPENDER
外向抱箍吊扣



FIXTURE CLAMPS & ACCESSORIES
萬向抱箍



WIRE SUSPENSION CABLE
鋼絲繩



Superior Reliability!

最佳可靠性

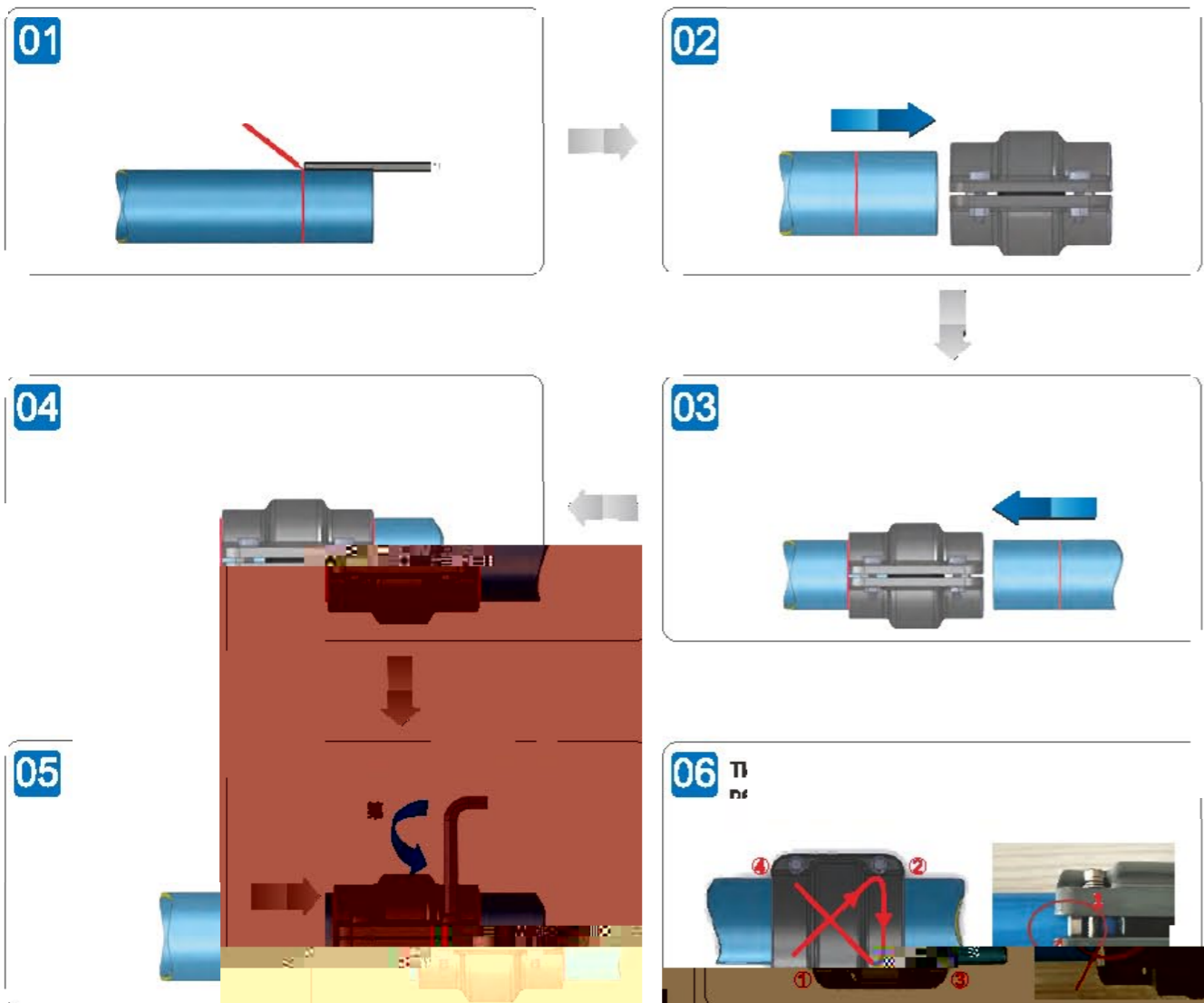


Insertion Depth S For DN20-DN50 Connector
DN20-DN50 (3/4" - 2") 管路安裝插入深度S

DN	Insertion depth S (mm)	插入深度S (mm)
50		39

•	•
•	•

Installation Guide for DN20~DN50 安裝指導DN20-DN50 (3/4" - 2")

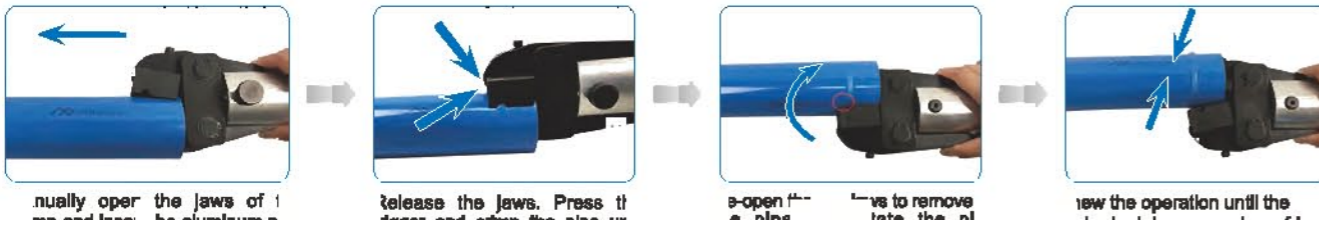


Deburr & Chamfer The Outer and Inner Edges Before Installation 安裝前去除管端切口內外的毛邊

-
-



Hand-held hydraulic lugging machine operation requirements 手持液壓凸管器作業要求



Number of lugs for each diameter: 每個直徑的凸管數量

AIRPIPE DN83 DN90 DN100 DN150 DN200

Note: Do not overlap the lugs

DN: 83 (Max)

Sizing Chart for Quick Drops 快換尺寸表

Dr Pipe Size (英寸)	Dr Pipe Size (毫米)	Quick Drops (PN)	快換 (PN)
3/4"	19.05	301 35 0005 01	301 35 0005 01
1"	25.4	301 35 0005 05	301 35 0005 05
1 1/4"	31.75	302 10 1004 01	302 10 1004 01
1 1/2"	38.1	302 10 1006 01	302 10 1006 01
2"	50.8	302 10 1104 01	302 10 1104 01
2 1/2"	63.5	302 10 1106 01	302 10 1106 01

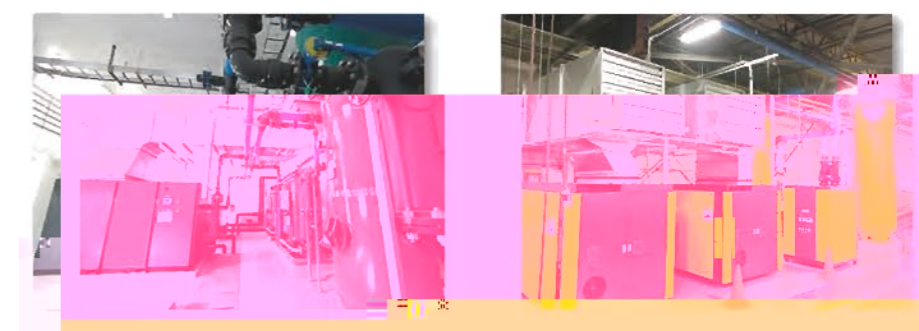
Flow Capacity Table (Flow in m³/h vs. Pipe Diameter and Length)

Flow (m ³ /h)	50M	100M	150M	200M	300M	500M	750M	1000M	1500M	2000M
20	20	20	20	20	20	20	20	20	20	20
30	30	30	30	30	30	30	30	30	30	30
40	40	40	40	40	40	40	40	40	40	40
50	50	50	50	50	50	50	50	50	50	50
60	60	60	60	60	60	60	60	60	60	60
70	70	70	70	70	70	70	70	70	70	70
80	80	80	80	80	80	80	80	80	80	80
90	90	90	90	90	90	90	90	90	90	90
100	100	100	100	100	100	100	100	100	100	100
120	120	120	120	120	120	120	120	120	120	120
150	150	150	150	150	150	150	150	150	150	150
180	180	180	180	180	180	180	180	180	180	180
200	200	200	200	200	200	200	200	200	200	200

Technical Specifications 工況範圍

- 適用管徑: 83mm - 200mm
- 適用管壁厚度: 3mm - 10mm
- 適用管種: 碳鋼、不銹鋼、鋁
- 適用管端形式: 平口、坡口
- 適用管口直徑: 100mm - 200mm
- 適用管口壁厚: 3mm - 10mm
- 適用管口材料: 碳鋼、不銹鋼、鋁
- 適用管口形式: 平口、坡口

Qualification & Standards 符合規範和標準



Engineered for Superior Performance 產品設計，只為最佳效能



we are at your **SERVICE**
我們始終在您的身邊

